


## Human MIF Protein

Cat #:PRP1947

Size: 5µg/20µg/100µg/1mg

### Product Information

	<b>Product Name:</b> Human MIF Protein		
<b>REF</b>	<b>Catalog Number:</b> PRP1947	<b>LOT</b>	<b>Lot Number:</b> Refer to product label
	<b>Purity:</b> > 97 % as determined by SDS-PAGE		
	<b>Storage:</b> Store at -20°C		<b>Preparation method:</b> E. coli
	<b>Shipping:</b> The product is shipped at ambient temperature.		

**Background:** Human MIF is a 12.5 kDa, 115 amino acid nonglycosylated polypeptide that is synthesized without a signal sequence. Secretion occurs nonclassically via an ABCA1 transporter. Pro-inflammatory cytokine. Involved in the innate immune response to bacterial pathogens. The expression of MIF at sites of inflammation suggests a role as mediator in regulating the function of macrophages in host defense. Counteracts the anti-inflammatory activity of glucocorticoids. Has phenylpyruvate tautomerase and dopachrome tautomerase activity (in vitro), but the physiological substrate is not known. It is not clear whether the tautomerase activity has any physiological relevance, and whether it is important for cytokine activity.

**Sequence:** Amino acid sequence derived from Human MIF (P14174) (Met1-Ala115) was expressed.

**Protein length:** The recombinant Mouse MIF consists of 120 amino acids and predicts a molecular mass of 13.1 kDa.

**Biological Activity:** Testing in progress.

**Endotoxin:** < 1 EU per µg of the protein as determined by the LAL method.

**Formulation:** Lyophilized from 20mM Tris, 150mM NaCl, pH 8.0.

**Storage Instructions:** Lyophilized protein product should be stored desiccated below -20°C. Upon reconstitution, the protein should be stored at 4°C between 2-7 days and for future use below -20°C. For long term storage it is recommended to add a carrier protein (0.1% HSA or BSA). Please prevent freeze-thaw cycles.

**Usage notes:** Always centrifuge tubes before opening. It is recommended to reconstitute the lyophilized protein using the buffer we provided not less than 100 µg/ml, which can then be further diluted to other aqueous solutions.

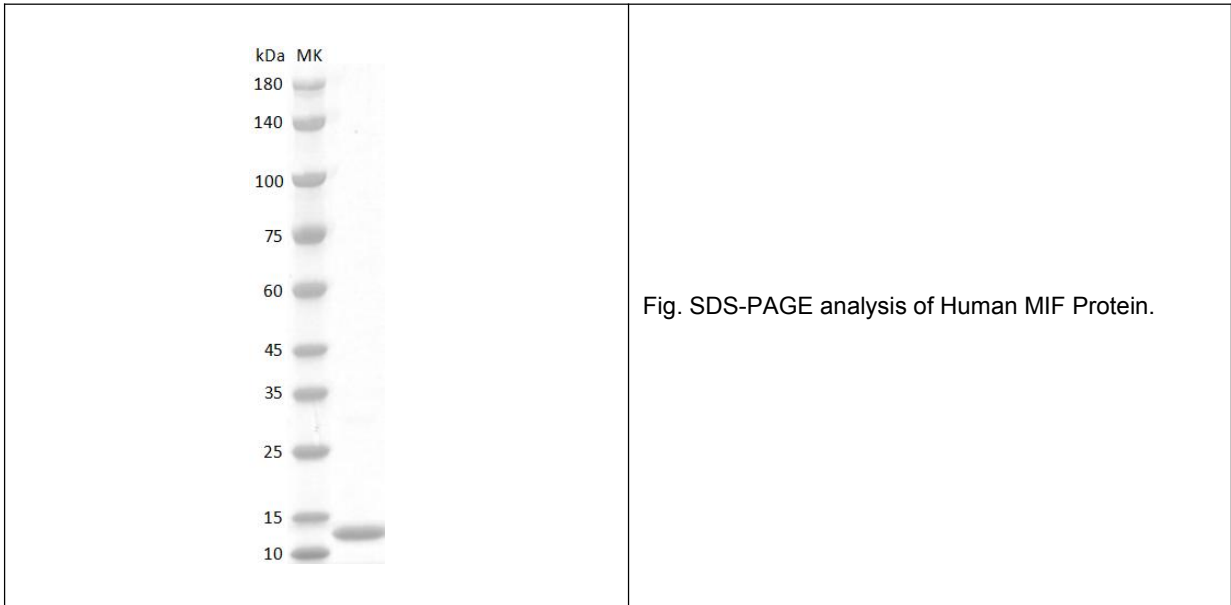


Fig. SDS-PAGE analysis of Human MIF Protein.

**Note:** The product listed herein is for research use only and is not intended for use in human or clinical diagnosis. Suggested applications of our products are not recommendations to use our products in violation of any patent or as a license. We cannot be responsible for patent infringements or other violations that may occur with the use of this product.